

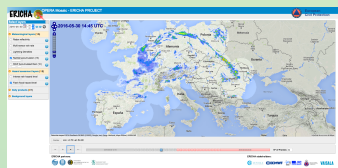
INTRODUCTION

ERICHA is the third of a series of EC Civil Protection projects focusing on assessing and anticipating hazards triggered by intense precipitation.

The ERICHA platform is a web application based on Google maps API. Fed with the EU radar mosaics produced by the EUMETNET project OPERA:

- Precipitation observations over Europe @2km and every 15 minutes.
- Operationally produced since mid 2011.

The ERICHA platform shows an animation of the radar mosaic in real time, plus a forecast with a resolution of 15 minutes. Also it is possible to see the historical radar composition.



FEATURES

- Google maps API
- EU radar mosaic (network of +200 radars)
- CFAH rainfall nowcasting algorithm
- Real time or historical animation
- Rainfall forecasts up to 8 hours
- Meteorological products
 - Radar reflectivity
 - Multi-sensor rain rate
 - Lightning densities
 - Rainfall accumulation (1 hour)
 - NWP accumulated rain (1 hour)
- Hazard products
 - Intense rain hazard level
 - Flash flood hazard level
- Daily products:
 - Rainfall accumulation (24 hour)

ERICHA PLATFORM

Select layers

2016-05-30 15:00 UTC

Meteorological layers (1/5)

- Radar reflectivity
- Multi-sensor rain rate
- Lightning Densities
- Rainfall accumulation (1h)
- NWP Accumulated Rain (1h)

Hazard assessment layers (1/2)

- Intense rain hazard level
- Flash flood hazard level

Daily products (0/1)

- Rainfall accumulation (24h)

Background layers

- Google Physical
- Google Streets
- Google Satellite
- Google Hybrid

Historical Navigation

Products

Google Layers

ERICHA PLATFORM

Location Control

Zoom Control

Current Location

Relocation Button

Animation Sequence

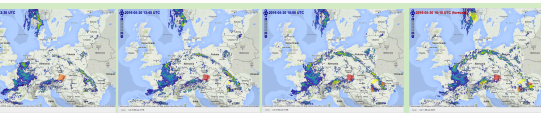
Current Frame

2016-05-30 19:30 UTC (forecast)

Animation Controls

Observations

Forecast Up to 8 hours



PRODUCTS

Radar reflectivity

Multi-sensor rain rate

PRODUCTS

Lightning densities

Rainfall accumulation (1h)

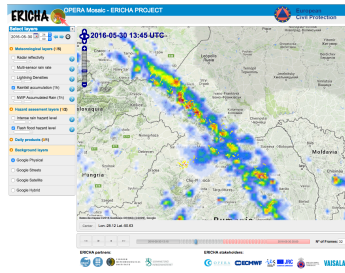
NWP Accumulated Rain (1h)

Intense rain hazard level

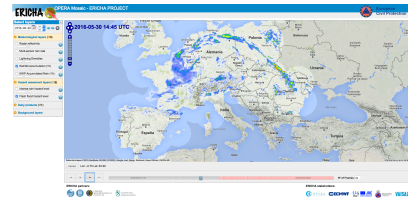
Flash flood hazard level

Rain accumulation (24h)

Using basin-aggregated rainfall collected by the catchment upstream of each point



ERICHA



Select layers

2016-05-30 14:45 UTC

- Meteorological layers (1/5)
 - Radar reflectivity
 - Multi-sensor rain rate
 - Lightning Densities
 - Rainfall accumulation (1h)
 - NWP Accumulated Rain (1h)
- Hazard assessment layers (1/2)
 - Intense rain hazard level
 - Flash flood hazard level
- Daily products (0/1)
- Background layers



DIRECCIÓN GENERAL DE PROTECCIÓN CIVIL Y EMERGENCIAS



Horizon 2020 European Union funding for Research & Innovation